



THE CHELSEA NURSERY  
DA MIHI SAPIENTIAM



CAMERON VALE SCHOOL  
DA MIHI SAPIENTIAM



# Cameron Vale School

26th April 2022

# Who are we?

Reputation for our family feel and nurturing the best for each child

Awarded **Excellent** rating by the ISI

Part of Forfar Education group of schools





A woman with blonde hair tied back, wearing a blue sweater and a grey scarf, is sitting at a table with several young children. They are in a classroom or playroom, with shelves of toys and books in the background. One child in the foreground is holding a red crayon to their mouth. Another child is holding a green stuffed animal. The woman is looking down at a book on the table. The text 'What makes Cameron Vale so special?' is overlaid on the left side of the image.

# What makes Cameron Vale so special?

We believe that happy children learn!



## What makes Cameron Vale so special?

- We develop children's mindset and values to ensure they are not deterred by challenge

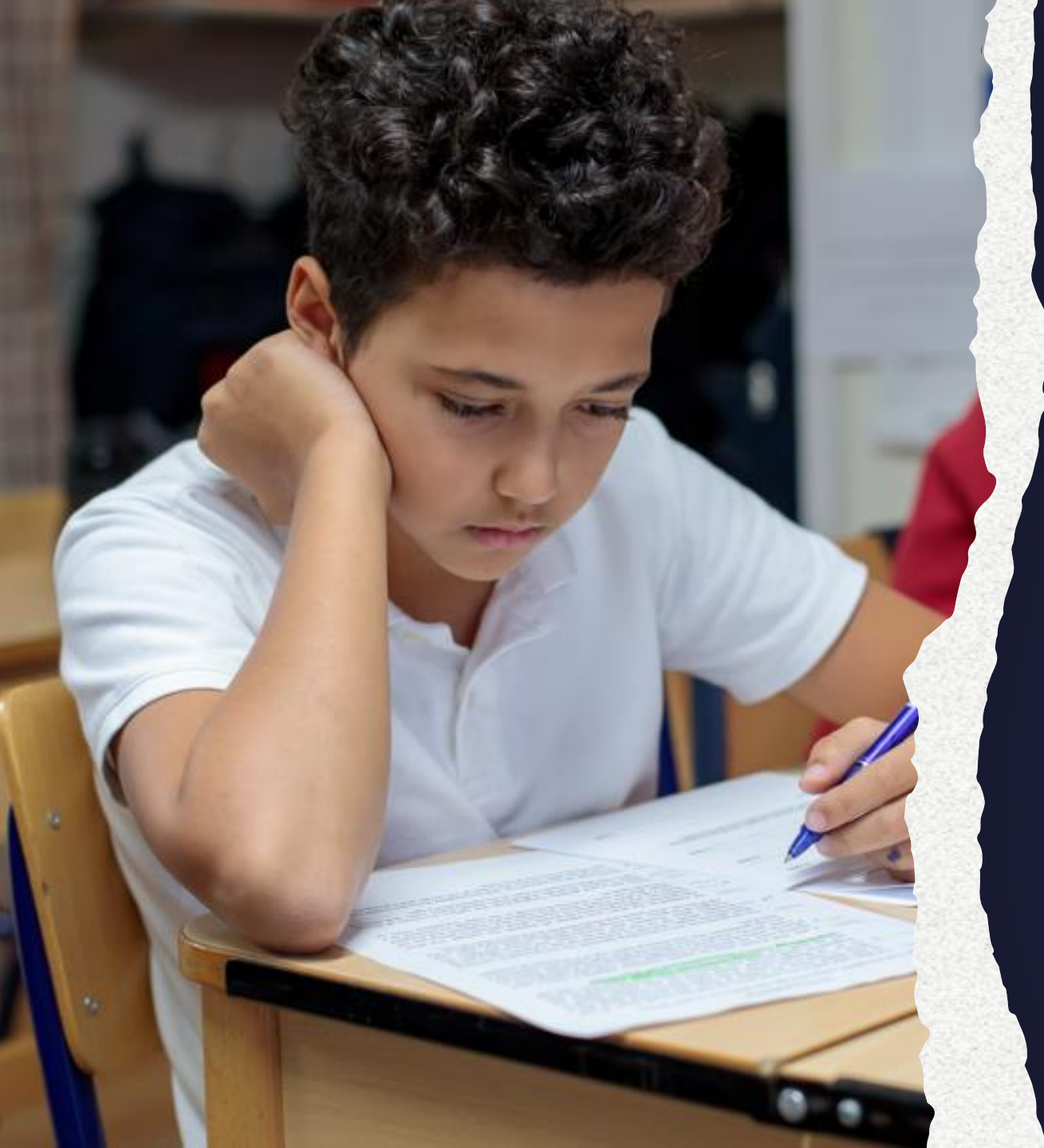




# **What makes Cameron Vale so special?**

We think long-term and  
teach beyond the  
classroom





# What makes Cameron Vale so special?

Big players on the 11+ stage!



# What makes Cameron Vale so special?

- Specialist teaching in music, languages and sport
- Specialist teaching in English and maths
- .....but we don't hot house them!

Co-educational Schools	Number of offers
Alleyn's	1
Emanuel School	1
Kensington Park School*	3 with 1 Art Scholarship
Harrodian School	1
Latymer Upper School	1
Maida Vale School	1
Thomas's Senior School*	2 with 1 Academic Scholarship
Girls' Schools	Number of offers
Francis Holland School, Regent's Park*	1 Academic Scholarship
Francis Holland School, Sloane Square*	2 with 1 Academic Scholarship
Godolphin and Latymer School	1
Queen's Gate School	2
Boys' Schools	Number of offers
Dulwich College	1
Wetherby Senior School	1
Girls' Boarding	
Benenden	1
St Mary's, Calne	1
Wycombe Abbey	1





“

Pupils attain high levels of achievement across all areas of the curriculum and in extra-curricular activities. They demonstrate high levels of knowledge and understanding and are able to apply their learning across other areas of the curriculum.

ISI Inspection



It's not about being first, in the top team or assuming the lead role in the play. At Cameron Vale, every child is valued, with the chance to speak, perform, compete and contribute; a refreshing approach in the London day school market!

CVS Parent

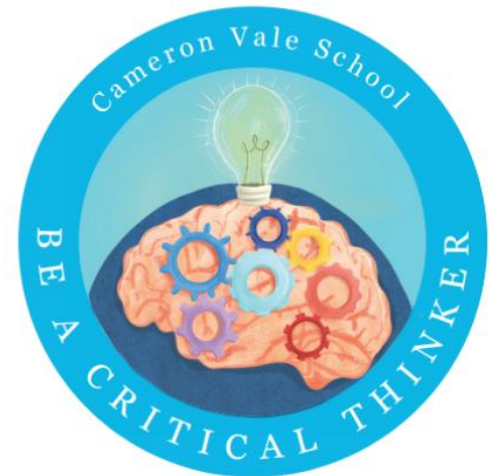




We couldn't be happier - our children run into school every morning and greet us at the end of the day full of news and smiles.

CVS Parent

# CVS Values





# Role Models

Impact driven  
British  
education  
provider.

Focus on life skills that  
promote social & emotional  
wellbeing and  
dynamic thinking, helping  
young people to thrive in life



Role  Models



# Nurturing creativity



CAMERON VALE SCHOOL  
DA MIHI SAPIENTIAM







# Forest School

---

- Confidence
  - Social skills
  - Communication
  - Motivation
  - Physical development
  - Knowledge and understanding
- 

Click to add text





# Admissions Process

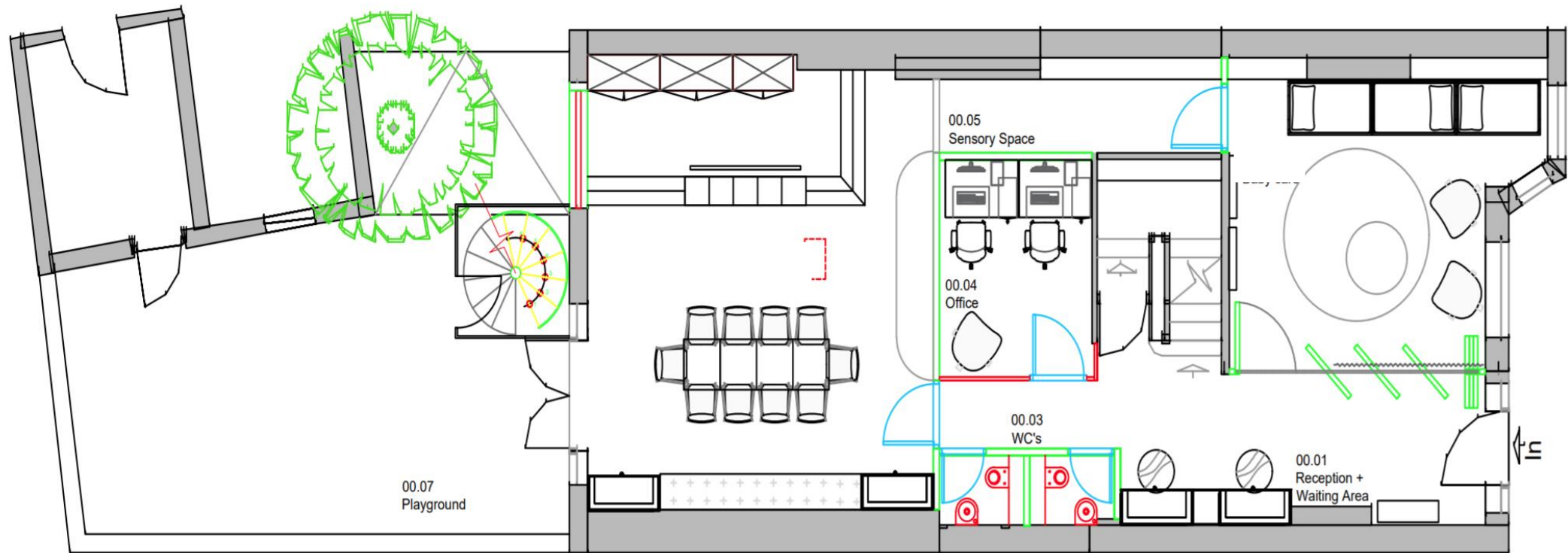
## Reception Admissions

Month	What to expect
October	Invitation to discovery session
November	Discovery session at CVS Nursery visits
December	Activity sessions at CVS
January	Places offered

## Nursery admissions

Take place throughout the year as and when your child turns 2. These are offered on a first come first served basis.





# Looking forward



# Looking forward